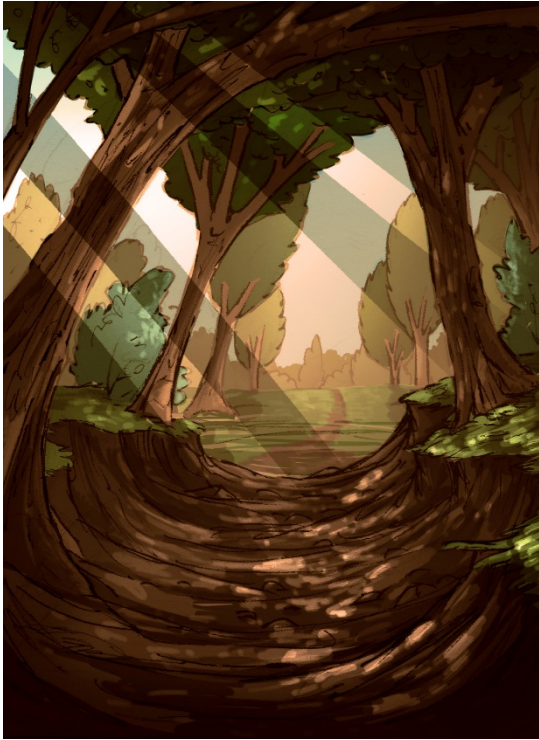


Explore a Woodland Habitat

A **habitat** is a place where animals and plants live. A good habitat has food, water and **shelter**.



The Woodland Habitat

A woodland is a habitat where lots of trees grow together. The leaves and branches **overlap** and give lots of **shade**.

Plants and Flowers

Bluebells and brambles grow in woodlands. Trees like oak and birch also grow in these places. Leaves, fruits and nuts are the **perfect** meal for animals.



Animals



Woodlands are habitats for lots of animals, birds and minibeasts because there are so many plants to eat.

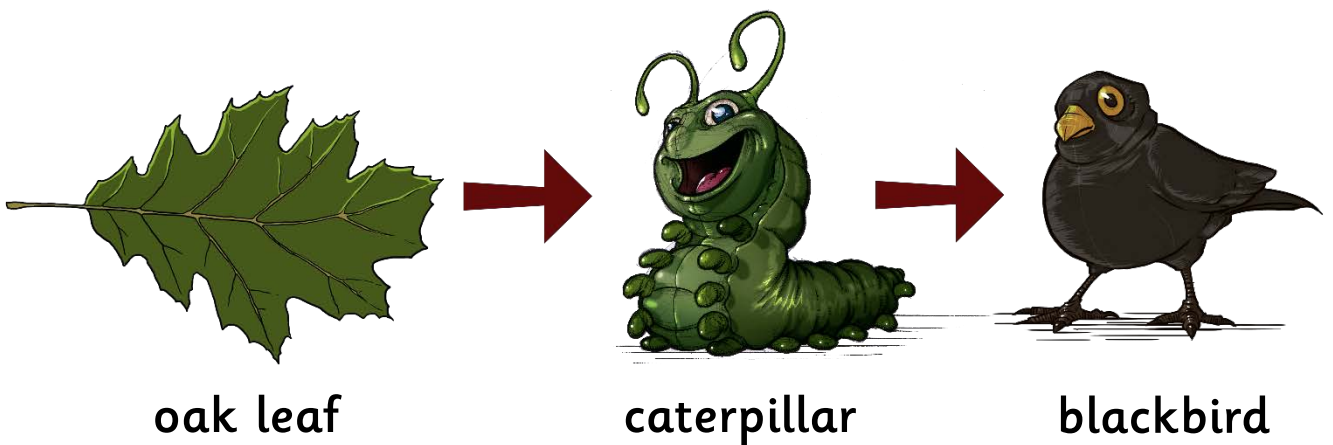
Animals like hedgehogs, badgers and foxes live there and make their homes in trees, on the woodland floor or **underground**.

Minibeasts can be found living in trees or bushes. Ants, slugs and **grubs** like to live in the leaves and spiders and ladybirds like to live in bushes.



Food Chains

Plants and animals living in the woodland are linked in something called a food chain. This starts with a plant like an oak tree. An insect, such as a caterpillar, will eat leaves from the tree and a small **creature** like a blackbird will eat the caterpillar. Then, a larger bird, such as a hawk, will eat the blackbird. In woodlands there are many food chains where animals and plants work together.



Have you ever visited a woodland habitat?

classroomsecrets.com

Explore a Woodland Habitat – Y1s/Y2e (Turquoise/Orange) – Text

Like this? Find more differentiated Animal resources [here](#).

Explore a Woodland Habitat – Follow-Up Work

What does the title tell us about the text?

What is a habitat?

What do you think the word 'shelter' means?

Give the names of some plants and trees that grow in a woodland habitat.

Give the names of some animals that live in a woodland habitat.

Which minibeasts like to live in bushes?

What is a food chain?

Why are plants, flowers and trees so important in a woodland habitat?

Find and copy a question from the text.

Can you think of any other plants, minibeasts or animals that could live in a woodland habitat?

After reading the text, what else do you want to find out about a woodland habitat?

Explore a Woodland Habitat – Vocab 1

Can you match the word to its correct meaning?

habitat a small animal like an insect
or spider

shelter a dark place where light is
blocked out

creature a place where animals and
plants live

minibeasts to cross over and cover

overlap a home or a place to hide

shade an animal

explore to search and find out

Explore a Woodland Habitat – Vocab 2

Choose the correct word from the list below to fit in the following sentences.

A woodland is a _____ for many animals.

A fox is a sly _____.

I went to _____ the woodland.

A badger lives _____.

Spiders and other insects are also called _____.

The woodland is a _____ habitat for many plants.

minibeasts

explore

habitat

creature

perfect

underground

Explore a Woodland Habitat – SPAG 1

Below is a passage from the text but all the capital letters and full stops are missing! Can you re-write the text and put them back in?

animals

woodlands are habitats for many animals, birds and minibeasts because there are so many plants to eat

animals such as hedgehogs, badgers and foxes live there and make their homes in trees, leaves on the woodland floor or even underground

a lot of minibeasts can be found living in trees or bushes. ants, slugs and grubs like to live in the leaves and spiders and ladybirds like to live in bushes

Finger Spaces

The sentences below are taken from the text but they have some missing finger spaces. Re-write the sentences and correct the mistakes.

A woodland is a habitat where lots of trees grow together.

A lot of minibeasts can be found living in trees or bushes.

The leaves and branches overlap and give a lot of shade.

A food chain starts with a plant like an oak tree.

A habitat is a place where animals and plants live.

Explore a Woodland Habitat – Oral Teacher Questions

What does the title tell us about the text? **It tells you that the text is about a woodland habitat.**

What is a habitat? **A habitat is a place where animals and plants live.**

What do you think the word 'shelter' means? **It means a home or a place to hide.**

Give the names of some plants and trees that grow in a woodland habitat. **Bluebells, brambles, oak and birch.**

Give the names of some animals that live in a woodland habitat. **Hedgehogs, badgers, foxes, birds (specifically hawks and blackbirds).**

Which minibeasts like to live in bushes? **Spiders and ladybirds.**

What is a food chain? **A system which links plants and animals based on what they eat.**

Why are plants, flowers and trees so important in a woodland habitat? **They are the beginning of all food chains. Without them all of the other minibeasts and animals would die.**

Find and copy a question from the text. **Have you ever visited a woodland habitat?**

Can you think of any other plants, minibeasts or animals that could live in a woodland habitat? **Personal response.**

After reading the text, what else do you want to find out about a woodland habitat? **Personal response.**

Explore a Woodland Habitat – Vocab 1

Can you match the word to its correct meaning?

habitat — a small animal like an insect or spider

shelter — a dark place where light is blocked out

creature — a place where animals and plants live

minibeasts — to cross over and cover

overlap — a home or a place to hide

shade — an animal

explore — to search and find out

Explore a Woodland Habitat – Vocab 2

Choose the correct word from the list below to fit in the following sentences.

A woodland is a **habitat** for many animals.

A fox is a sly **creature**.

I went to **explore** the woodland.

A badger lives **underground**.

Spiders and other insects are also called **minibeasts**.

The woodland is a **perfect** habitat for many plants.

minibeasts

explore

habitat

creature

perfect

underground

Explore a Woodland Habitat – SPAG 1

Below is a passage from the text but all the capital letters and full stops are missing! Can you re-write the text and put them back in?

animals

woodlands are habitats for many animals, birds and minibeasts because there are so many plants to eat

animals such as hedgehogs, badgers and foxes live there and make their homes in trees, leaves on the woodland floor or even underground

a lot of minibeasts can be found living in trees or bushes. ants, slugs and grubs like to live in the leaves and spiders and ladybirds like to live in bushes

Woodlands are habitats for many animals, birds and minibeasts because there are so many plants to eat.

Animals such as hedgehogs, badgers and foxes live there and make their homes in trees, leaves on the woodland floor or even underground.

A lot of minibeasts can be found living in trees or bushes. ants, slugs and grubs like to live in the leaves and spiders and ladybirds like to live in bushes.

Finger Spaces

The sentences below are taken from the text but they have some missing finger spaces. Re-write the sentences and correct the mistakes.

A woodland is a habitat wherelots of trees grow together.

A **woodland** is a habitat **where lots** of trees grow together.

A lotof minibeasts canbe found living in trees or bushes.

A **lot of** minibeasts **can be** found living in trees or bushes.

The leaves and branches overlap andgive lotsof shade.

The leaves and branches overlap **and give lots of** shade.

A food chain startswith a plant likean oak tree.

A food chain **starts with** a plant **like an** oak tree.

A habitat isa place where animals andplants live.

A habitat **is a** place where animals **and plants** live.